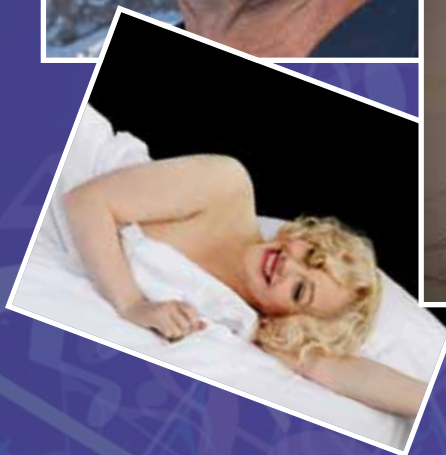
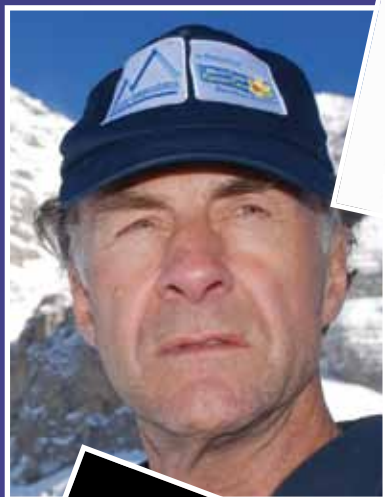


THEATRE

LIVE
ARTS
AND
FILM

REGAL
THEATRE
MINEHEAD



Summer 2014
May - August

*Bringing to the people of West Somerset
a wide variety of quality film and performing arts.*

For the community, by the community.



The theatre is run by the M.A.T.A. (Minehead Amateur Theatrical Association) Regal Theatre Company, a group of volunteers devoted to maintaining and developing live theatre in the centre of Minehead. Everyone who regularly works in the theatre is a volunteer, and MATA gratefully acknowledges the invaluable contribution they make. Without them, the theatre could not operate. The company is limited by guarantee (Company no. 3149984) and is a registered charity (No. 1052714)

COVER IMAGES

TOP CENTRE	12 YEARS A SLAVE	24th June
TOP RIGHT	Mozart's COSI FAN TUTTI	23rd July
MIDDLE LEFT	SIR RANULPH FIENNES	22nd July
MIDDLE RIGHT	LES MISÉRABLES	14th - 23rd August
BOTTOM LEFT	UNREMARKABLE DEATH OF MARILYN MONROE	17th June

**For a large print copy of this brochure,
please phone the Box Office**

Box Office: 01643 706430

www.regaltheatre.co.uk

Details are correct at the time of going to press. If you book in advance, please check the local press or the Regal website before setting out on a journey to the theatre.

DIARY OF PERFORMANCES

MAY

Thursday 1st - Saturday 3rd	THE REMARKABLY STRANGE CASE OF DOCTOR WATSON & THE SPITALFIELDS VAMPIRES - Waterfront Theatre Company	05
Tuesday 6th	PHILOMENA - The Regal Film Society	05
Saturday 10th - Sunday 11th	WEST SOMERSET DANCE FESTIVAL	06
Saturday 10th	DANCE IN THE PARK	06
Sunday 11th	DANCE 2014	06
Thursday 22nd - Saturday 24th	PLAZA SUITE by Neil Simon - Minehead Dramatic Society	07
Saturday 31st - Sunday 1st June	BABE THE SHEEP-PIG - Oasis Theatre	07

JUNE

Tuesday 3rd	THE PAST - The Regal Film Society	08
Friday 6th	ZOLTAR SPEAKS - Band	09
Friday 13th	THE IMAGE OF CLIFF & THE SHADOWS	09
Tuesday 17th	UNREMARKABLE DEATH OF MARILYN MONROE - Dyad Productions	10
Tuesday 24th	12 YEARS A SLAVE (Cert 15) Regal Film Society	10
Wednesday 25th	SAUCE FOR THE GOOSE by Georges Feydeau - Bristol Old Vic Theatre School	11
Thursday 26th	MINEHEAD MIDDLE SCHOOL SUMMER CONCERT	11

JULY

Friday 4th - Saturday 5th	LOST IN MUSIC LA Dancers and students from the Dance Centre	12
Thursday 17th - Saturday 19th	OH WHAT A LOVELY WAR - Barnstormers	12
Tuesday 22nd	SIR RANULPH FIENNES - An illustrated talk	13
Wednesday 23rd	Mozart's COSI FAN TUTTI - Pop-up Opera Company	14
Saturday 26th	ROCK & ROLL PARADISE - tribute show to all the greats	14
27th July - 2nd August	MINEHEAD & EXMOOR MUSIC FESTIVAL	15
Thursday 31st	FESTIVAL ORCHESTRA conducted by Richard Dickins	15

AUGUST

Saturday 2nd	END OF FESTIVAL CONCERT	15
Thursday 14th - Saturday 23rd	LES MISÉRABLES (Schools Edition) - MATA Summer Show	16
Thursday 28th - Saturday 30th	THE PRINCE OF DENMARK STREET - Waterfront Theatre Company	17

FORTHCOMING EVENTS

SEPTEMBER

Tuesday 2nd	Regal Film Society - New season opens	18
Thursday 4th	5 STAR SWING BIG BAND	18
Thursday 11th	BEST CELLAR THEATRE COMPANY – Gothic Thriller	
Saturday 13th	THE LAMENT OF THE BLACK SHEEP - Ange Hardy - Concert	18
Friday 19th	ROCK AND BLUES NIGHT - Johnny Mars & Cutting Edge	18
Saturday 27th & Sunday 28th	SLEUTH by Anthony Shaffer - Hocus Pocus	18

JANUARY 2015

Saturday 3rd - Saturday 10th	ALI BABA AND THE FORTY THIEVES - Panto	19
------------------------------	--	----

THE REGAL THEATRE

The Regal Theatre offers a mixed programme of good quality professional and community entertainment. A bar is available at all performances, open during intervals and half an hour before the start of a performance. Children are very welcome at the theatre. Under tens should be accompanied by an adult and supervised when on the balcony.



The theatre auditorium is at first floor level but all public areas are fully accessible. The new lift carries people to all floors of the building and there are user friendly toilets for those with special mobility needs. There are a number of spaces in the auditorium for wheelchair users and their companions; these need to be booked in advance to ensure availability.

A hearing loop is installed in the auditorium and will be in use for nearly all shows. The box office will soon have a hearing loop to assist people with hearing difficulties.

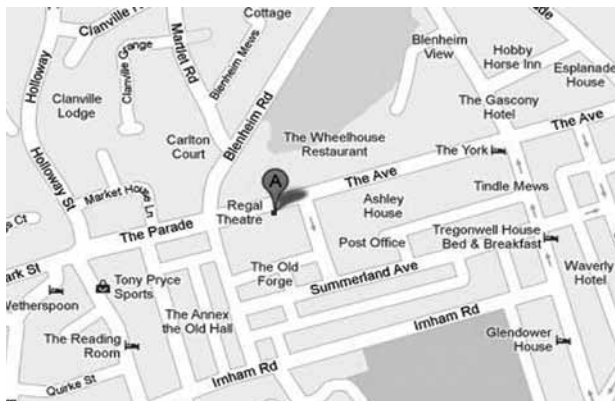
There is a strict 'No Smoking' policy in operation throughout the theatre and on the balcony at all times.

HOW TO FIND US

As you approach Minehead follow signs to the town centre and turn right at Wellington Square. The entrance to the theatre is on the right just beyond Iceland and opposite the Methodist Church.

Alternatively, from the sea front proceed towards the town centre passing the railway station on your left. The theatre is on the left just beyond the Co-op.

There is a public car park behind the theatre where there are some spaces for disabled drivers. You will find the car park entrance beside the Co-op. Parking is free after 6.00pm.



10-16 The Avenue
Minehead
Somerset
TA24 5AY

Thursday 1st - Saturday 3rd May at 7.30pm
TICKETS: Adults £8.00, Friends £7.50,
ES40's/Children £4.50

Waterfront Theatre Company
**THE REMARKABLY STRANGE
CASE OF DOCTOR WATSON
and
THE SPITALFIELDS
VAMPIRES**

By Fred Owen



May
01 -
03

Sherlock Holmes has long retired to deepest Sussex to keep bees, but Doctor John H. Watson still lives at 221b Baker Street; although life there is a little dull. He has given up sleuthing in favour of running a small bookshop in Great Russell Street (*Opposite the British Museum*) and on Sundays he offers a free clinic to the poor and needy of London's East End.

Things for Watson begin to liven up with the arrival of Jack Hudson, his old landlady's grandson and a chance meeting with his old friend Inspector George Lestrade, who is on the verge of retirement from Scotland Yard. Lestrade tells him of strange happenings in and around the graveyard of Christ Church, Spitalfields and Jack (who happens to work at the British Museum) encounters even stranger and disturbing things in the basement of the venerable institution where he is employed.

A witty, scary show, not suitable for persons under 14.

Tuesday 6th May at 7.30pm
TICKETS: Members £2.50, Non Members £4.50
OPEN TO THE PUBLIC

The Regal Film Society
PHILOMENA



May
06

Dir Stephen Frears UK 2013 98 mins

British director Stephen Frear's award winning film is based on a book by BBC correspondent and Labour government adviser Martin Sixsmith about his friendship with Philomena Lee and their search for the child she was forced by Roman Catholic nuns to give up for adoption when she was a teenager 50 years ago. Stars Judi Dench and Steve Coogan.

May
10 -
11

10th – 11th May

WEST SOMERSET DANCE FESTIVAL

Dance groups from around West Somerset showcase their work with DANCE IN THE PARK and DANCE 2014 in the Regal Theatre.



May
10

Saturday 10th May

DANCE IN THE PARK

The Dance Festival begins with a FREE afternoon of fun, music and dance in Blenheim Gardens from 1.00pm. With opportunities to listen to live music and singing, see local dance companies perform and to take part in what you fancy!

See something you might enjoy? Who knows, you may discover a hidden talent! Information on dance classes running in the local area is available on the day. Just ask one of the Dance Leaders for information.



May
11

Sunday 11th May at 7.30pm

**TICKETS: Adults £6.50, Friends £6.00,
ES40's/Students £4.50**

DANCE 2014

The big event of the dance festival where local companies raise the roof with a showcase of dance from classical ballet to street. If you want to see some incredible routines to some amazing music, come along and see 'DANCE 2014', featuring local dancers of all ages and genres coming together for one night to entertain! This show is not to be missed!



Thursday 22nd – Saturday 24th May at 7.30pm

TICKETS: Adults £8.00, Friends £7.50,

ES40's/Students £5.00

Minehead Dramatic Society

PLAZA SUITE

by Neil Simon

Plaza Suite follows the fortunes of three different sets of guests in suite 719 at the exclusive Plaza hotel overlooking Central Park in New York. Ranging from tragic-comedy to superb slapstick, this play shows playwright Neil Simon at his scintillating best. As always, his dialogue is brilliant and guarantees laughter and enjoyment.



May
22 -
24

Saturday 31st May at 7.30pm & Sunday 1st June at 2.30pm

Tickets: Adults £5.50, Friends £5.00, ES40's/Students £2.50

Oasis Theatre

BABE THE SHEEP-PIG

David Hare's adaptation of the book by Dick King-Smith

A tale of humble beginnings and courageous triumphs; of how a piglet became the world famous "sheep-pig".

When Babe is won by Farmer Hogget at the village fair an extraordinary friendship develops. With the help of the old dog Fly, Babe fast learns the herding instinct, and before long this most polite of pigs wins over the most suspicious of sheep. At the Grand Challenge Sheep-Dog Trials, the whole farm holds its breath to see whether Babe will triumph, against all odds, to become the hero of the hour.

The audience will love this heartwarming story of adventure in the farmyard, as well as the enthusiastic dance, singing and acting of the young Oasis group which includes local people of all ages and all abilities.

In this performance there will be some signing, narration and back-up singing to enable everyone to achieve their best performance.



May
31 -
Jun 01

Jun
03

Tuesday 3rd June at 7.30pm
TICKETS: Members £2.50, Guests £4.50
OPEN TO MEMBERS AND THEIR GUESTS

The Regal Film Society

THE PAST

Asghar Farhadi France/Iran 2013 130 mins



THE
REGAL
FILM
SOCIETY

From the award-winning director of *A Separation*, screened by the film society last season, comes another superbly crafted and powerful human drama about an Iranian man who travels to Paris to finalise the divorce from his French wife after four years apart. A complex web of relationships emerges between the couple, her new partner and their extended family.
Subtitled.

To be confirmed.

Stuarts Home Furnishers



***For the best
seat in the
house***

27 FRIDAY STREET MINEHEAD
01643 707974

www.stuartshomefurnishers.co.uk

Friday 6th June at 8.00pm

TICKETS: Adults £6.00, Friends £5.50, Children £4.00

Jun
06

ZOLTAR SPEAKS

Well known for their high energy shows, big vocals, big sound and big attitude! Supported by another local band.

Formed in 2009 and bursting on to the metal scene, Zoltar Speaks are fronted by enigmatic vocalist Louise Body, with Ben Dean hammering at the drums and Jason Coles shredding it up on guitar.



These three are from our very own Minehead and are joined by Simon Roocroft providing the backbone on bass and Daniel Pratt wailing on lead guitar, both hailing from Devon. The unstoppable five-piece have appeared in popular alternative music magazines such as Kerrang, Rocksound and Metal Hammer and have built up an army of dedicated followers with the release of their debut EP 'Treatment'. With the launch of their new full length album 'Save As I Save', the ascending metal crew are set to soar.

Do not miss them at The Regal Theatre for their first home town show in over a year!

Friday 13th June at 7.30pm

TICKETS: Adults £16.50, Friends £16.00, ES40's/Students £8.50

Jun
13

THE IMAGE OF CLIFF & THE SHADOWS

Two popular acts come together after a successful appearance at the London Palladium. **KYTSUN WOLFE** and **The Sounds of THE SHADOWS** appeal to fans with a performance that takes them back to their teens at an actual **CLIFF RICHARD & THE SHADOWS** concert.

One of the most iconic 'Rock 'n' Roll' acts ever produced in the UK, the music of Cliff Richard is still as popular as it was back in the 50's and 60's.

KYTSUN WOLFE and The Sounds of THE SHADOWS enjoy support across the country because of their exceptional talents and because no other act can recreate the illusion with such accuracy.



Jun
17

Tuesday 17th June at 8.00pm
TICKETS: Adults £11.50, Friends £11.00,
ES40's/Students £6.00

Lizzie Wort in

UNREMARKABLE DEATH OF MARILYN MONROE

Presented by Dyad Productions
(Female Gothic 2013)



Monroe as we've never seen her before: alone in her bedroom, in dressing gown and slippers; no glitz, no glamour, no masks. Overdosed on pills, the woman behind the icon unravels her remarkable life and bares all, revealing a biting intelligence, a frustrated talent and an imperfect body. This stark confessional (DiMaggio, Gable, Miller, her mother – it's all here) offers a radical interpretation of this Hollywood legend and leads us, in real time, to the very moment of her death.

Written and directed by Elton Townend Jones.

The performance lasts 85 minutes without an interval. The bar will open early before the show. Age guidance 12+ years

Jun
24

Tuesday 24th June at 7.30pm
TICKETS: Members £2.50, Non Members £4.50
Regal Film Society end-of-season gala – open to the public

The Regal Film Society

12 YEARS A SLAVE (Cert 15)

Dir: Steve McQueen USA/UK 2013 134 mins

Winner of this year's Oscar and Bafta for Best Film as well as a string of other awards, this important film by a British director addresses head-on the realities of the slave trade in mid-19th Century America.

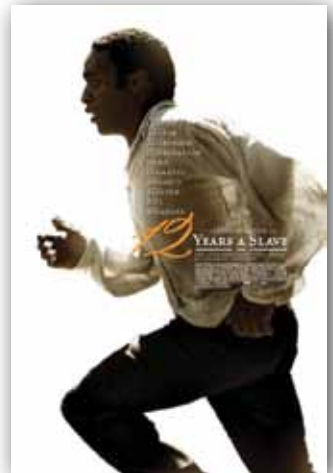
The film is based on the 1853 autobiography of Solomon Northup, a free black man living in upstate New York, who was abducted and sold into slavery. Chiwetel Ejiofor gives

a powerful, Bafta-winning performance as family man and gentleman Solomon Northup who, when robbed of his freedom and name, refuses to allow his persecutors to break his spirit.

Given the subject matter, it is not surprising that the film contains some violent scenes.

Numbered tickets may be booked in advance.

Besides free sparkling wine, to mark the end of the film society's season, fresh Miles coffee and cake from Toucan Wholefoods will be available from 7 pm onwards.



Wednesday 25th June at 7.30pm
TICKETS: Adults £9.50, Friends £9.00,
ES40's/Students £4.00

Bristol Old Vic Theatre School

SAUCE FOR THE GOOSE

by Georges Feydeau

Translated by Peter Meyer.

Directed by Christopher Scott. Designed by Mick Bearwish

Georges Feydeau's high spirited romp *Sauce For The Goose* is stuffed with preening characters knitting their legs in sexual frustration.

Its heady mix of passions, pace and pleasure are the perfect mix for a good night out. The plot is simple: Lucienne is being pursued by the married Pontagnac, who is astounded to discover that she is already married to his friend Vatelín. Lucienne has sworn to be faithful as long as her husband remains so too. But then a keen old 'indiscretion' of her husband's arrives with her own husband from Germany in tow.

Everyone ends up in the Hotel Ultimus, where the guests include an old army doctor and his deaf wife, in Paris to celebrate their wedding anniversary. Beds are swapped, infidelities discovered and everyone's Goose is cooked good and proper!

Untrustworthy husbands, betrayed wives, artful servants and crazed Germans demonstrate why the "naughty nineties" were so named, as master French farceur Feydeau's sparkling play switches from riotous farce to barbed social satire.

See the 'Stars of Tomorrow in a Play for Today'.
(Suitable 12yrs+).



Jun
25

Thursday 26th June at 6.30pm
TICKETS: Adults £7.00, Children under 14 £3.00,
Family ticket £17.50 (2 adults/2 children!)

MINEHEAD MIDDLE SCHOOL SUMMER CONCERT

For one night only, Minehead Middle School's talented pupils will be performing a wonderful musical medley of music, dance and song, many of them fresh from their triumphs at the school's 'Minehead's Got Talent' fund-raising competition. This is a rare opportunity to see some of Minehead's most talented children together on stage, doing what they do best.

An evening not to be missed.



Jun
26

Jul
04-05

Friday 4th - Saturday 5th July at 7.30pm

TICKETS: Adults £7.50, Friends £7.00, ES40's/Students £5.50

LA Dancers and students from the Dance Centre in

LOST IN MUSIC

With fresh choreography and music to suit all ages, the THE LA DANCERS and students from THE DANCE CENTRE return in their new show 'LOST IN MUSIC'.

Many different dance styles will be showcased, including Streetdance, Celtic, Musical Theatre, Hiphop and contemporary, to the sounds of various artists such as Michael Jackson, Jake Bugg, Billy Joel, Pharrell and Brainstorm and musical excerpts from stage shows 'Singing In the Rain', 'Jersey Bits' and 'Ticket Outta Loserville'.

Alongside the LA Dancers will be the LA Stars, LA Boyz, LA Ladies and A.L.A, all led and choreographed predominately by Lorraine Ahern.



There will be something for everyone to enjoy, so book up fast for an exciting, invigorating and fun packed show.

Jul
17-19

Thursday 17th – Saturday 19th July at 7.30pm

TICKETS: Adults £8.00, Friends £7.50, ES40's/Students £3.50

Barnstormers

OH WHAT A LOVELY WAR

Joan Littlewood and Theatre Workshop's Musical Entertainment

A history of the First World War, told through songs, images and documents in the form of a seaside pierrot entertainment of the period. Originally devised and presented by Joan Littlewood's Theatre Workshop in 1963, the play highlights the ironies and tragedies of the First World War in stories and songs. Seen from the perspective of the common soldier, songs from the period are interspersed with battle statistics, and news headlines chronicle the manoeuvrings of the European powers.



Tuesday 22nd July at 7.30pm
TICKETS: Adults £15.00, Friends £14.50,
ES40's/Students £10.00

An illustrated talk by
SIR RANULPH FIENNES

Spend an evening with Sir Ranulph Fiennes – our own local hero - described by the Guinness Book of Records as “The World’s Greatest Living Explorer”.

He has led 22 major expeditions to remote parts of the world, including both Poles. He is the only man alive to have travelled around the Earth’s circumpolar surface, and the first explorer to completely cross the Antarctic continent on foot and unsupported. At the age of 65 he climbed Mount Everest, becoming the oldest Briton ever to do so. To date, Sir Ranulph has raised over £16 million for UK charities through his expeditions and in 1993 was awarded an OBE for “Human Endeavour and Charitable Services”.

This evening is a rare chance to hear about this remarkable man’s experiences first hand and get an insight into how he has accomplished so much.

Proceeds from this event go to the Exford church bell tower appeal.

Book signing in the Regal Bar after the talk.



Celebrating the best seafood in the South West



The Regal Pre Theatre Menu

Join us before a matinée or evening performance at the Regal Theatre and enjoy a light 2 course seasonal menu for £12 in our Seafood Restaurant.

Simply mention the Regal Theatre when booking your table. We look forward to welcoming you to Pips Fish very soon.

Pips Fish, 35 The Ave, Minehead TA24 5AY
Tel: 01643 708 353

www.pipsfish.com



Travis Perkins

Minehead Branch

Mart Road,
Minehead,
Somerset.

TA24 5AR

Tel: 01643 703702

Fax: 01643 706136

www.travisperkins.co.uk

Jul
23

Wednesday 23rd July at 7.30pm
TICKETS: Adults £18.00, Friends £17.50,
ES40's/Students £10.00

Mozart's COSI FAN TUTTI

Pop-up Opera Company

If you've never enjoyed opera before, Pop-Up Opera will convert you with their refreshing production of beautiful music, top-class singing and exceptional acting. Dedicated opera lovers will also be delighted by this excitingly different and imaginative performance.

Così Fan Tutti is Mozart's famous and much loved comedy about two sisters, Fiordiligi and Dorabella and their fiancés Ferrando and Guglielmo, who after a wager with the naughty Don Alfonso, try to test the girls' fidelity by posing as strangers and trying to seduce them. Aided by the maid Despina, Don Alfonso's plot has the girls hoodwinked and much hilarity ensues.



Pop-Up Opera is an innovative touring opera company showcasing exciting new operatic talent (professional opera singers in the first stage of promising careers). Their aim is to make opera enjoyable, without losing the quality of musical performance, and broadening its appeal by making it fun, fresh and intimate.

The performance will be sung in Italian with English translation captions projected above the stage.

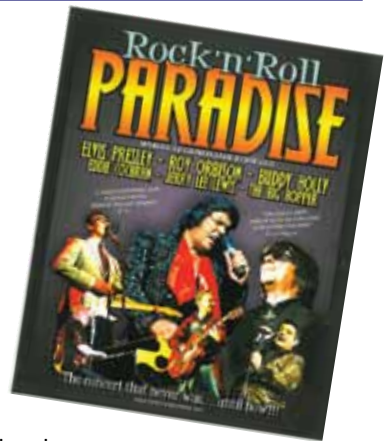
Jul
26

Saturday 26th July at 8.00pm
TICKETS: Adults £18.50, Friends £18.00,
ES40's/Students £10.00

ROCK & ROLL PARADISE

'Rock 'n' Roll Paradise' is a spectacular rock 'n' roll show where the music plays the star role! In a dream tribute line up of 6 legendary acts, enjoy the best of Elvis Presley, Jerry Lee Lewis, Buddy Holly, Roy Orbison, the Big Bopper and Eddie Cochran as these icons of rock and roll join each other on stage for a musical extravaganza. Backed by the superb Paradise Band, this show has audiences dancing in the aisles, singing along and yelling for more.

If you are a fan of live music, Rock 'n' Roll Paradise has something for you in a two hour celebration of the magic of rock and roll with over 40 songs packed into a roof raising show.



27th July - 2nd August

MINEHEAD & EXMOOR MUSIC FESTIVAL



All concerts start at 7.30pm

CONCERTS AT THE REGAL THEATRE

TICKETS: Adults £15.00, Students £3.50

All tickets available to the public from 30th June

Jul
27
Aug
02

Thursday 31st July at 7.30pm

THE FESTIVAL ORCHESTRA CONDUCTED BY RICHARD DICKINS

Vaughan Williams: Fantasia on Greensleeves

Elgar: Cello Concerto

Soloist: Laura van der Heijden – cello,

- BBC Young Musician of the Year 2012

Butterworth: Rhapsody – A Shropshire Lad

Britten: Sinfonia da Requiem



Jul
31

Saturday 2nd August at 7.30pm

END OF FESTIVAL CONCERT

The Festival Orchestra conducted by Richard Dickins

Mendelssohn: Overture Ruy Blas

Walton: Viola Concerto

Soloist: Krzysztof Chorzelski – viola

Rimsky-Korsakov: Scheherazade



Aug
02

The Minehead & Exmoor Music Festival is 51 years old this year. Each year it has provided a full symphony orchestra with internationally renowned soloists producing four concerts in a week in West Somerset.

All concerts feature the Festival Orchestra conducted by Richard Dickins, who, as Director of Music at Imperial College, London and principal conductor at the Royal College of Music Junior Department, is able to ensure the appearance of well established soloists as well as up and coming stars.

The Festival has been described as *“Music performed at a level of excellence always amazing to those who hear it, especially for the first time.”* *“...a most exciting and stimulating experience.”*

All Festival concert tickets are available from 30th June and can be purchased at the Regal Theatre - up to £13.00 for Dunster, 28th July and Dulverton 29th July.

For information about other Festival Concerts and members' priority ticket purchase, pick up a Festival Leaflet or go to www.mineheadmusicfestival.org

Aug
14-23

Thursday 14th– Saturday 23rd August at 7.30pm
(No performance on Sunday 17th)

LES MISÉRABLES

(SCHOOLS EDITION)

MATA Summer Show

A musical by ALAIN BOUBLIL and CLAUDE-MICHEL
SCHÖNBERG

**TICKETS: Adults £9.00, Friends £8.50,
ES40's/Students £5.00**

Family Ticket (2 adults, 2 children) £25

**OPENING NIGHT OFFER. All tickets £5. Hurry before they
sell out!**



Epic, grand and uplifting. Les Misérables packs an emotional punch that has thrilled audiences all over the world. Now the world's best selling musical arrives at The Regal Theatre. Performed by an incredibly talented cast of under 20 year olds from across Somerset and supported by a live orchestra, Les Misérables School Edition is an entirely sung musical overflowing with melodies that are already standards, including *I Dreamed A Dream*, *Bring Him Home* and *Do You Hear The People Sing*.



In 19th century France, Jean Valjean is imprisoned for stealing a loaf of bread. Paroled after 19 years he becomes an honest and successful man adopting a daughter but violating his parole in the process. He is relentlessly pursued by Inspector Javert as a consequence, but finally feels fully redeemed when he saves the life of the young student during the Paris uprising.

Originally adapted from Victor Hugo's timeless novel, Les Misérables (School Edition) has touched the hearts of millions. Within it lies the universal truth "To love another person is to see the face of God" and this message is sure to have a lasting impact.

Direction by Sarah Jane Cross. Choreography by Lorraine Ahern.

Musical Direction by Joseph Buckler.

School Edition specially adapted and licensed by JOSEF WEINBERGER LIMITED on behalf of Music Theatre International and CAMERON MACKINTOSH (OVERSEAS) LIMITED.

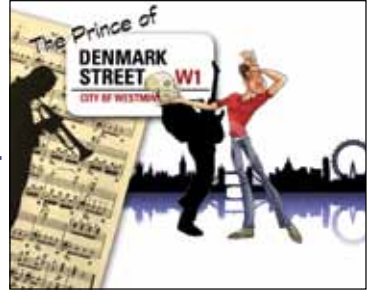
Thursday 28th – Saturday 30th August at 7.30pm
TICKETS: Adults £8.00, Friends £7.50,
ES40's/Students £4.50

Waterfront Theatre Company

THE PRINCE OF DENMARK STREET

A Musical by Fred Owen

*"We'll Tell You a Tale by Willie the Shake
Bout a Man Called Ham with Decisions to Make"*



Aug
28-30

Welcome to Soho and the neon tinged world of Hammy De-Jay and his nasty Uncle Claudius; President of Elsinore Entertainment Co., the biggest name in the music industry since Simon Cowell. Hammy De-Jay is not a happy disco-bunny; he suspects Claudius of being involved in his father's recent demise and he's not too sure about *Mummy* either, especially as she's just married Uncle Claudius and is so Botoxed, she looks younger than her son.

Full of catchy songs and dance numbers THE PRINCE OF DENMARK offers an evening of colourful escapism in a reworking of Shakespeare's immortal tale with The Waterfront Theatre doing what it does best.

J. GLIDDON & SONS
Est. 175 Years

**TRADITIONAL
HARDWARE SHOP**
WILLITON · SOMERSET

Tel: 01984 632761
Open: 8am - 5pm Weekdays (LUNCH 1-2pm)
8am - 1pm Saturday

**S I M P L Y
BLINDS & CURTAINS**

ANDREW ESCOTT
FOR ALL YOUR
WINDOW FURNISHING NEEDS

**CURTAINS - BLINDS
AWNINGS
SHUTTERS - FLYSCREENS**

SEE OUR HUGE RANGE AT OUR SHOWROOMS
WITHIN **MORRIS & Co. CARPETS**
MART ROAD
MINEHEAD TA24 5BY

FREE MEASURE AND QUOTATION SERVICE
10% DISCOUNT ON ORDERS
WHEN MENTIONING THE REGAL BROCHURE
01643 702366

Sep
02

COMING UP IN SEPTEMBER ...

Tuesday 2nd September
REGAL FILM SOCIETY
The new season opens



**THE
REGAL
FILM
SOCIETY**

Sep
04

Thursday 4th September at 8.00pm
5 STAR SWING BIG BAND

The unique "feel-good" Big Band show – swing along with songs from Glenn Miller, Sinatra, Basie, Ella Fitzgerald, Jazz & Blues. Featuring Simone from the Ivy Benson Orchestra, Michael Innes – trombonist to Tony Bennett and Shirley Bassey plus Chris Smith (Jnr) composer and arranger for the BBC Radio Big Band, Herb Miller Big Band (Glenn's brother).



Sep
13

Saturday 13th September at 8.00pm
Ange Hardy
THE LAMENT OF THE BLACK SHEEP
Album Launch Concert

Join Ange Hardy and special guest musicians for this one-off evening to celebrate the official launch of one of the most eagerly anticipated folk albums of 2014.

These are songs of heritage, stories of working the land, tales deeply rooted in the traditions of rural life and West Somerset.

£4.50 for early bird tickets before 13th July.



Sep
19

Friday 19th September at 7.30pm
ROCK AND BLUES NIGHT WITH JOHNNY MARS & CUTTING EDGE

Johnny Mars on harmonica and his band play blues, while Cutting Edge, who have supported bands as diverse as the Drifters, Showaddywaddy and the Ludwig Beatles, play rock, as they come together for a one off show.

Sep
27-28

Saturday 27th & Sunday 28th September at 7.30pm
Hocus Pocus
SLEUTH
by Anthony Shaffer

Sleuth is the most fiendishly clever thriller ever written for the stage.
Take the perfect crime ... and then go one step further!

ARTWORK ON DISPLAY IN THE REGAL

The Regal is delighted that artists consent to display their works in the theatre. The current display by Chris Howe will finish by the end of April.

For the month of May, **Victoria Ward** will hold her exhibition 'HERE & THERE' which will include paintings of Somerset & of New Zealand in soft pastels, watercolour & acrylics. Lino Prints and cards will also be available.



Landscape of the Broken Heart
Christopher Richards christopherrichards.co.uk

In June there will be displays by **Christopher Richards**, a landscape artist from Minehead who works in acrylics - often with crayon and pastel embellishments, and in July **Tony Buckler** will be showing his photos.

AND ... NEXT YEAR'S PANTO WILL BE ...

Saturday 3rd – Saturday 10th January 2015

ALI BABA AND THE FORTY THIEVES

by Alan P Frayn



Jan
3-10

An Arabian Nights Tale as a wonderful pantomime full of slapstick, magical effects and an Arabian themed UV scene.

Ali Baba is the poor woodcutter and the hero of the story which also includes beautiful Princess Jasmine from Cairo, Asbad the King and leader of the forty thieves, whose memorable words to open the treasure cave are "Open Sesame". Other entertaining characters are the scoundrels - Bashim and Grabbit, Fatima Fandango - the loveable Dame and former belly dancer with her house boy, Mustapha Screwloose. The traditional Immortals are represented by the good spirit Caterina, of feline descent, and the evil spirit Alsatia, of canine descent.

Directed by Kris McNeill, and produced by Alison Welsh. Choreography by Hannah Thompson and Manda Clarke. Musical Director Dean Bradwell.

Pantomime Auditions all at "The Hub" Alcombe.

Children 8 to 12 years - Saturday 12th July at 2pm & Tuesday 15th July at 6pm.

Adults 13 years and over - Saturday 12th July at 3.30pm, Tuesday 15th July at 7.30pm, Wednesday 16th July at 7.30pm.

REGAL FILM SOCIETY

The Regal Theatre is home to the Regal Film Society, now in its 19th season. It is the largest film society in the South West and the second largest in Britain, with nearly 400 members. Recently released films



from the UK and around the world are screened every month on the original 35mm Westrex projector that was used when the Regal was a commercial cinema. The screen is also one of the largest in the area, measuring 40ft x 20ft. Films are also projected using a recently purchased digital projector with Blu-ray high definition capability to project DVDs as well as 35mm film. Details of film society screenings are included in this brochure. The cost of membership is £16.50 (individual) £27 (couple) and £11 (concessions) and tickets on the night cost £2.50 for members and £4.50 for non members.

For more details about the Film Society please ring Victoria on 01643 831343.

Membership of the Film Society DOES NOT include membership of the Friends of the Regal!

FRIENDS OF THE REGAL

The Regal Theatre is a hugely successful community project. Over 200 volunteers maintain the building and open the theatre for events and refreshments in the bar on more than 120 nights a year. Many people show their support by becoming a FRIEND OF THE REGAL. The annual subscription entitles a Friend to receive regular newsletters about activities, discounts on most tickets when booking in advance (usually 50p) and the satisfaction of knowing that you are supporting the local community theatre! The subscription is £5.00 per adult which includes children living at the same address.

The Regal greatly appreciates the enormous support it receives from the community and from the Friends. If you are not already a Friend, can we ask you to consider becoming a Friend of the Regal? To do this you need only ask one of the theatre staff for an application form or call into the box office. Requests can be made by sending an email to the Regal Theatre from the web-site: www.regaltheatre.co.uk

Membership of the Friends of the Regal DOES NOT include membership of the Film Society!

Keep in touch with the Regal Theatre.

Email the theatre from the website to sign up for our regular Regal E-News.

'Like' our page on Facebook to receive day to day news of what is going on.

KEEPING IN TOUCH WITH THE REGAL THEATRE

The Regal Theatre is at the heart of the community and values the support and participation shown by the people of West Somerset.



To keep in touch with events, auditions, opportunities and news you can:

Become a Friend of the Regal (see page 20) and receive a Regal brochure through your letter box, together with a newsletter.

Visit the Regal web-site (regaltheatre.co.uk) to see what is on and book your tickets.

Send us an email from the website to sign up for our regular Regal E-News.

'Like' our page on Facebook to receive day to day news of what is happening and auditions.



www.facebook.com/pages/The-Regal-Theatre/157726074270925

VOLUNTEERING

The Regal Theatre is entirely run by volunteers. About 200 people give their time and without them we could not operate. We value all that they do. They help with Front of House duties, building sets and keeping the theatre functioning and in good decorative order, box office duties, packing and distributing the brochure and more technical jobs in the sound and lighting departments.

Training is often needed to maintain our high standards and to conform with Health & Safety and other legislation, and the theatre arranges this. To volunteer at the Regal, go into the box office and speak to the box office volunteers, or contact the Regal through their web-site.

Some people would like to appear on the stage, or to work backstage, with one of the MATA companies. The best way to do this is to go to the Regal Website, go to the 'OUR MEMBER COMPANIES' tab and contact the companies directly. Also look out for news of audition dates in the press or on the Regal Facebook page.

CRANMERS

OPTOMETRISTS



Est. 1908

Cranmers Optometrists

**Providing the
community of Minehead
with eyecare since 1908**

Tel:01643 702204
Quality you can trust

Box Office: 01643 706430
www.regaltheatre.co.uk

THEATRE

REGAL THEATRE MINEHEAD



Box Office 01643 706430